

TeraCloud Storage Framework z/Express

What is TSF z/Express?

TSF z/Express delivers the first Java-enabled enterprise Storage Resource Management (SRM) solution that simplifies the administration and management of mainframe storage resources from a single point of control. TSF z/Express helps you plan more effectively, lower administration costs, and puts you in control of your storage environment. Its reliable, easy-to-use centralized reporting can improve utilization of your existing storage assets. Best of all, TSF z/Express is FREE !

TSF z/Express Optimizes DASD Utilization

Optimize your data management practices and storage utilization with TeraCloud's easy-to-use storage inventory management solution. Manage by exception and improve DASD utilization by identifying hotspots before they become business problems. Storage activity across multiple CPUs can be viewed at a glance. Efficient analysis and management of the entire mainframe storage enterprise can be accomplished from a single point of control.

Solution Highlights

Common Storage Management Console This easy to use interface provides Detail and Summary reporting, as well as saved user views allowing data to be sorted and filtered.

Provides Action Capabilities Actions are provided for immediate execution from the interface giving the user control over dynamic creation of JCL against the selected objects.

Logical Pooling Definitions View an application set of data that spans all media types (disk, tape, HSM) within the z/OS storage environment.

Centralize management of your storage inventory while creating sorted, filtered reports.

Visualize and create custom reports on DASD and SMS Pool information.

Monitor the health and performance of data storage and take corrective action from anywhere.

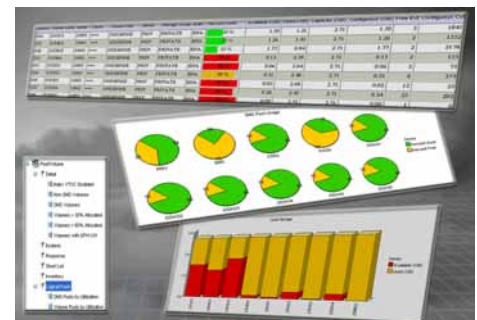
Manage By Exception to identify and resolve hotspots in mainframe storage.

Easy Upgrade

Powerful Features TSF z/Express may be upgraded through a simple license key file that enables TSF features such as Dataset, Tape, HSM, Catalog, Logical Pools, Automation (on z/OS) and Distributed systems platforms (Windows, Linux, Solaris, AIX) including Groups, Policies, extended search capabilities, unlimited history retention and ProActivity script submission.

Supported Environments

- ▶ z/OS (all IBM supported versions)
- ▶ IBM DFSMS, all versions and releases
- ▶ Interlink TCP/IP, all versions and releases
- ▶ RACF, ACF2 and Top Secret, all versions and releases
- ▶ TCP/IP, all versions and releases



Click to add or change photo

TSF z/Express System Detail, Zoom, and Summary

For more information about this or other TeraCloud products and services, please call 800.742.3389 or 425.709.2900, or visit our Web site at www.teracloud.com

Challenge

Keeping storage-related expenses to a minimum

Monitor your current utilization and track it over time in ways that are easy to customize to fit your organization. TSF z/Express puts Volume, Pool, Controller and SMS Status information at your finger tips.

Removing repetitive data-gathering tasks

TSF z/Express is on duty 24X7 and has JCL submission capabilities that enable you to find the right information, dynamically create JCL streams and submit corrective actions immediately.

Visually understand mainframe data

TSF z/Express shows you graphically how your data consumes storage resources, giving you the visibility you need to control storage growth and provide necessary levels of service at a lower cost.

Increasing DASD efficiency

TSF z/Express improves storage utilization with powerful modeling and capacity planning. Increased DASD efficiency will either eliminate the need for or delay hardware purchases.

Growth May Lead to Need For More Features

TSF z/Express is easily upgradeable to TSF through a simple re-issuance of license keys. You do not have to uninstall and re-install the software. TSF extends TSF z/Express into an all-encompassing storage management suite covering datasets, tape, HSM, and catalog for the mainframe and distributed systems data.

Solution

TSF z/Express provides one single interface for storage data allowing access to storage metrics at the volume, pool and controller levels on any z/OS system. Near real-time data is maintained at all times with capabilities to obtain "up to the second" updates on volume and pool data.

The Java interface can be launched from either Windows or Unix platforms and enables a graphical user interface (GUI) display of storage in the z/OS world.

Detail and Summary views of z/OS data are accompanied with awesome graphing capabilities that allow creation of graph sets that can be saved as a default or set aside for periodic access and use as needs dictate. All of this can be customized so only the data needed can be filtered and presented in a detail, summary or graphed format.

TSF z/Express runs as a storage subsystem within z/OS providing collector scheduling capabilities as well as handling GUI agent requests and servicing requests for Pool/Volume/Controller statistics held in dataspace. TSF z/Express maintains Controller statistics information with drilldown to the volumes behind each controller. This information shows the cache hit ratios for each volume and provides information on the configuration of cache on each controller. Parallel Access Volume (PAV) information is also available as you view a specific tape volume serial number (VOLSER). This allows drilldown and depiction of the base address and the number of aliases for that address. Wrapped around every collected record is the ability to perform actions directly from the interface and query of historical information maintained for that record.

TSF z/Express makes it easy to access, analyze and customize countless views of storage. Create aggregate reports across the z/OS enterprise, or drill-down for detailed analysis of specific volumes. Develop an interactive, analytical representation of your entire DASD population.

TSF z/Express provides solutions that address common storage issues, while offering the flexibility to manage storage across your z/OS enterprise.

Key Benefits

- ▶ View native and graphic representations of your storage with either a 3270 ISPF or Java-based interface
- ▶ Centralize storage management across many z/OS Sysplex environments for a single point of management and control
- ▶ Multiple levels of reporting with drill down capabilities that place valuable data at fingertips quickly making staff productivity increase dramatically
- ▶ Implement consistent, action based storage management best practices
- ▶ Optimize space utilization to leverage legacy hardware investments and postpone future hardware purchases
- ▶ Tune DFSMS with detailed information about your storage inventory
- ▶ Reduce z/OS storage complexity with access to real-time information and the ability to report by exception



DEV	VOLUME	MODEL	PAV	PAV	SMS	STORGRP	STORGRP
ADDR	NAME		DEV	COUNT	STATUS	NAME	STATUS
0100	TCL0001	2750000	Y	3	ENABLED	TCL00002	ENABLED
0102	TCL0001	2750000	Y	2	ENABLED	TCL00002	ENABLED
0104	TCL0001	2750000	Y	4	ENABLED	TCL00002	ENABLED
0106	TCL0011	2750000	Y	3	ENABLED	TCL00002	ENABLED
0108	TCL0012	2750000	Y	3	ENABLED	TCL00002	ENABLED
0110	TCL0002	2750000	Y	3	ENABLED	TCL00002	ENABLED
1000	TCL0003	2750000	Y	3	ENABLED	TCL00002	ENABLED

SVS	SYSTEM	SVSNAME	VOLUME	VOL MVS	STORGRP	STORGRP	STORGRP
NUM	NAME	TYPE	STATUS	STATUS	NAME	TYPE	STATUS
000	TCL0002	SHRONLY	ENABLED	NOSTATUS	TCL00002	POOL	ENABLED
001	TCL0002	SHRONLY	ENABLED	NOSTATUS	TCL00002	POOL	ENABLED
002	TCL0002	SHRONLY	ENABLED	NOSTATUS	TCL00002	POOL	ENABLED
003	TCL0002	SHRONLY	ENABLED	ONLINE	TCL00002	POOL	ENABLED

Click here to add photo

Monitor your z/OS storage with comprehensive reporting features